

A new genus belonging to the dancefly tribe Drapetini Collin of the subfamily Tachydromiinae from Korea (Diptera: Empidoidea: Hybotidae)

Jin Hyung KWON^{1,C}, Yong Jung KWON², Sang Jae SUH² and Ding YANG³

¹Illinois Natural History Survey, University of Illinois, Champaign, IL 61820, USA

²School of Applied Biosciences, Kyungpook National University, Daegu 41519, Korea

³Department of Entomology, China Agricultural University, Beijing 100193, China

^CCorresponding author: E-mail: jhkwon@illinois.edu

Abstract

In the dancefly tribe Drapetini Collin, 1961 of the subfamily Tachydromiinae, the genus *Elaphropeza* Macquart, 1827 alone has been recorded in the inventory of Korean Empidoidea made by Kwon *et al.* (2021). During the taxonomic survey on the danceflies in Korean peninsula, the authors have found the second Korean genus new to science: *Stilponoides yunae* gen. et sp. nov. The present new genus can be easily recognized by having the wing with vein R2+3 terminated at exceeding middle of C; cercus of male genitalia armed with comb-like appendage. Description, illustration of morphological features and key to the Korean genera are provided respectively.

Key words: Diptera, Empidoidea, Hybotidae, dancefly, taxonomy, identification, new genus.

Introduction

The danceflies belonging to the tribe Drapetini Collin, 1961 in the subfamily Tachydromiinae Meigen, 1822 are comparatively tiny small in body size, and 19 genera have been known until now. The adults are predacious feeding on minute insects or mites, and would often observed visiting flowers, which are known to represent cosmopolitan in distributional trend.

The constituent genera can be characterized by having the compound eye micropubescent, with prosternum separated from proepisternum, lacking humeral bristles, closely placed hooks between abdominal tergites, and bearing squamiform abdominal setae in male.

Among the tribe Drapetini, the genus *Elaphropeza* Macquart, 1827 alone, incorporating 4 species, was recorded in the inventory of Korean Empidoidea made by Kwon *et al.* (2021).

In the course of the taxonomic survey on the danceflies in Korean peninsula, the authors have found the second Korean genus new to science: *Stilponoides yunae* gen. et sp. nov.

The present new genus is allied to *Stilpon* Loew, 1850 distributed in Holarctic region, but it can be easily recognized by having the wing with vein R2+3 terminated at exceeding middle of C, and by the cercus of male genitalia armed with comb-like appendage, which may be unique morphological characteristics within the tribe.

Description, illustration of morphological features and key to the Korean genera are provided respectively.

Systematics

Superfamily Empidoidea Latreille, 1804 춤파리상과
Family Hybotidae Meigen, 1820 꼬추춤파리과
Subfamily Tachydromiinae Meigen, 1822 중다리춤파리아과
Tribe Drapetini Collin, 1961 남춤파리족

Checklist of dancefly genera from Korea

Genus *Elaphropeza* Macquart, 1827 애춤파리속
Type-species: *Tachydromia ephippiata* Fallén, 1815
Genus *Stilponoides* gen. nov. 꼭지춤파리속(신칭)
Type-species: *Stilponoides yunae* gen. et sp. nov.

Key to the dancefly genera from Korea

1. Wing with vein R2+3 terminated at before middle of C; R4+5 and M rather subparallel each other distally. Male cercus lacking comb-like appendage ----- *Stilpon*
- . Wing with vein R2+3 exceeding middle of C; R4+5 and M gently curved, divergent each other distally. Male cercus armed with comb-like appendage ----- *Stilponoides* gen. nov.

Genus *Stilponoides* gen. nov.

Diagnosis: Wing with hind margin gently rounded basally; vein R2+3 terminated at exceeding middle of C; R4+5 and M gently curved and divergent each other distally. Male genitalia bearing cercus armed with comb-like appendage.

Stilponoides yunae gen. et sp. nov. 꼭지춤파리(신칭)

Description: Generally coloring dark brown to black, dark greyish brown partially, pollinose on body surface. Legs yellowish brown, somewhat tinted with smoky streaks on femora distally. Wing 2.5 times as long as wide, broadest at distal 3/5; apical margin deeply rounded at junction with M; hind margin gently rounded basally; costal margin slightly concave at junction with vein R1; R2+3 terminated at exceeding middle of C; R4+5 and M gently curved and divergent each other distally. Male genitalia with sustylus asymmetrical, with right one rhomboid distally; cercus bearing comb-like appendage armed with a row of pectinate teeth and one spine-like large process on the top..

Type-material: Holotype ♂, Mt. Balwangsan, GW, Korea, 16, VI, 2020, YJ Kwon; paratypes: 1♂ and 2♀, same data as holotype.

Distribution: Korea (new record: Central).

References

- Chvála M, Wagner, R (1989) Family Empididae. In Catalogue of Palaearctic Diptera, 6. Edited by Á. Soós. Akadémiai Kiadó, Budapest, 435pp.
- Kwon YJ, Kwon JH, Suh SJ (2021) A preliminary catalogue of the danceflies from Korean peninsula (Diptera: Empididae). 50th Anniversary Conference of the Entomological Society of Korea: 68.
- Lee CE, Kwon YJ (1975) Notes on the danceflies from Korea (Diptera: Empididae). Proceedings of the annual meeting of the Entomological Society of Korea, Seoul.
- Yang D, Zhang KY, Yao G, Zhang JH (2007) World catalog of Empididae (Insecta: Diptera). China Agricultural University Press, Beijing, 599pp.
- Yang D, Yang CK (2004) Diptera Empididae: Hemerodromiinae, Hybotinae. Fauna Sinica, Insecta, 34, i-x, 1-335, pl. 1.

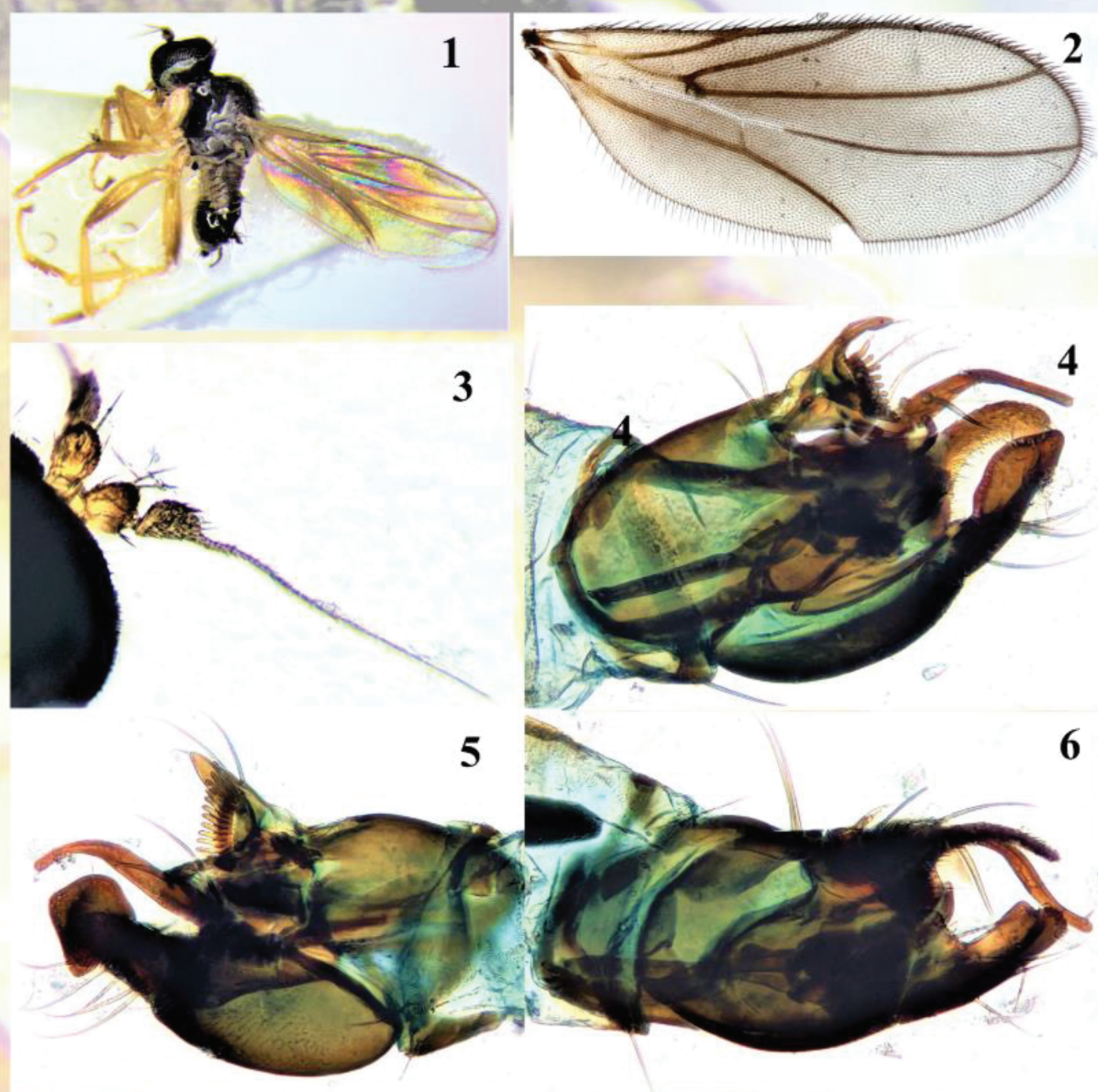


Fig. 1-6. *Stilponoides yunae* gen. et sp. nov. 1: male habitus in lateral view, 2: wing, 3: antenna, 4: male genitalia, left dorso-lateral view, 5: ditto, right lateral view, 6: ditto, ventral view.